

**Applied Regression Modeling:
A Business Approach**
Chapter 5: Regression Model Building II
Sections 5.3–5.4

by Iain Pardoe

Exploratory data analysis

5.3 Model building guidelines

Exploratory data analysis

Building model up

Simplifying model

Model interpretation

5.4 Model interpretation using graphics

1. Carefully frame your questions and identify the data that will help answer the questions.

Exploratory data analysis

5.3 Model building guidelines

Exploratory data analysis

Building model up
Simplifying model
Model interpretation

5.4 Model interpretation using graphics

1. Carefully frame your questions and identify the data that will help answer the questions.
2. Collect and organize data—usually the most time-consuming part of process (haven't said much about this step because our focus has been elsewhere).

Exploratory data analysis

5.3 Model building guidelines

Exploratory data analysis

Building model up
Simplifying model
Model interpretation

5.4 Model interpretation using graphics

1. Carefully frame your questions and identify the data that will help answer the questions.
2. Collect and organize data—usually the most time-consuming part of process (haven't said much about this step because our focus has been elsewhere).
3. Organize data for analysis—includes checking for mistakes and coding qualitative variables using indicator variables.

Exploratory data analysis

5.3 Model building guidelines

Exploratory data analysis

Building model up
Simplifying model
Model interpretation

5.4 Model interpretation using graphics

1. Carefully frame your questions and identify the data that will help answer the questions.
2. Collect and organize data—usually the most time-consuming part of process (haven't said much about this step because our focus has been elsewhere).
3. Organize data for analysis—includes checking for mistakes and coding qualitative variables using indicator variables.
4. Graph data (using a scatterplot matrix, say) and calculate summary statistics to get a feel for dataset—this can highlight potential data mistakes and might suggest transformations (e.g., highly skewed variables are often best transformed to natural logarithms before further analysis).

Building model up

5. Fit initial model using quantitative predictors and qualitative indicator variables—use untransformed Y as response unless transformed Y suggested (e.g., replace highly skewed Y with $\log_e(Y)$).

5.3 Model building guidelines

Exploratory data analysis

Building model up

Simplifying model

Model interpretation

5.4 Model interpretation using graphics

Building model up

5. Fit initial model using quantitative predictors and qualitative indicator variables—use untransformed Y as response unless transformed Y suggested (e.g., replace highly skewed Y with $\log_e(Y)$).
6. Check four regression assumptions for initial model using residual plots—if one or more is clearly violated then proceed to step 7, otherwise if everything checks out proceed to step 8.

5.3 Model building guidelines

Exploratory data analysis

Building model up

Simplifying model

Model interpretation

5.4 Model interpretation using graphics

Building model up

5. Fit initial model using quantitative predictors and qualitative indicator variables—use untransformed Y as response unless transformed Y suggested (e.g., replace highly skewed Y with $\log_e(Y)$).
6. Check four regression assumptions for initial model using residual plots—if one or more is clearly violated then proceed to step 7, otherwise if everything checks out proceed to step 8.
7. Add interactions/transformations so assumptions check out—start simple and try more complicated models as needed (once model is adequate and assumptions check out, proceed to step 8):

5.3 Model building guidelines

Exploratory data analysis

Building model up

Simplifying model

Model interpretation

5.4 Model interpretation using graphics

Building model up

5. Fit initial model using quantitative predictors and qualitative indicator variables—use untransformed Y as response unless transformed Y suggested (e.g., replace highly skewed Y with $\log_e(Y)$).
6. Check four regression assumptions for initial model using residual plots—if one or more is clearly violated then proceed to step 7, otherwise if everything checks out proceed to step 8.
7. Add interactions/transformations so assumptions check out—start simple and try more complicated models as needed (once model is adequate and assumptions check out, proceed to step 8):
 - first try interactions between indicator variables and quantitative predictors (e.g., DX_1 , DX_2);

5.3 Model building guidelines

Exploratory data analysis

Building model up

Simplifying model

Model interpretation

5.4 Model interpretation using graphics

Building model up

5. Fit initial model using quantitative predictors and qualitative indicator variables—use untransformed Y as response unless transformed Y suggested (e.g., replace highly skewed Y with $\log_e(Y)$).
6. Check four regression assumptions for initial model using residual plots—if one or more is clearly violated then proceed to step 7, otherwise if everything checks out proceed to step 8.
7. Add interactions/transformations so assumptions check out—start simple and try more complicated models as needed (once model is adequate and assumptions check out, proceed to step 8):
 - first try interactions between indicator variables and quantitative predictors (e.g., DX_1, DX_2);
 - if model still inadequate, next try adding/replacing transformations (e.g., add X_1^2 , or replace X_1 with $\log_e(X_1)$ or $1/X_1$);

5.3 Model building guidelines

Exploratory data analysis

Building model up

Simplifying model

Model interpretation

5.4 Model interpretation using graphics

Building model up

5. Fit initial model using quantitative predictors and qualitative indicator variables—use untransformed Y as response unless transformed Y suggested (e.g., replace highly skewed Y with $\log_e(Y)$).
6. Check four regression assumptions for initial model using residual plots—if one or more is clearly violated then proceed to step 7, otherwise if everything checks out proceed to step 8.
7. Add interactions/transformations so assumptions check out—start simple and try more complicated models as needed (once model is adequate and assumptions check out, proceed to step 8):
 - first try interactions between indicator variables and quantitative predictors (e.g., DX_1, DX_2);
 - if model still inadequate, next try adding/replacing transformations (e.g., add X_1^2 , or replace X_1 with $\log_e(X_1)$ or $1/X_1$);
 - if model still inadequate, next try adding all-quantitative interactions (e.g., X_1X_2).

5.3 Model building guidelines

Exploratory data analysis

Building model up

Simplifying model

Model interpretation

5.4 Model interpretation using graphics

5.3 Model building
guidelines

Exploratory data
analysis

Building model up

Simplifying model

Model interpretation

5.4 Model
interpretation using
graphics

8. Simplify model in stages (aim for parsimonious model that captures major, important population relationships between variables without getting distracted by minor, unimportant sample relationships):

8. Simplify model in stages (aim for parsimonious model that captures major, important population relationships between variables without getting distracted by minor, unimportant sample relationships):
 - evaluate each model to identify which predictors, interactions, and transformations to retain and which to remove—methods include R^2 , adjusted R^2 , regression standard error (s), and regression parameter hypothesis tests (global usefulness, nested model, individual);

8. Simplify model in stages (aim for parsimonious model that captures major, important population relationships between variables without getting distracted by minor, unimportant sample relationships):
 - evaluate each model to identify which predictors, interactions, and transformations to retain and which to remove—methods include R^2 , adjusted R^2 , regression standard error (s), and regression parameter hypothesis tests (global usefulness, nested model, individual);
 - remove all redundant predictors, interactions, and transformations (retain hierarchy and proceed a few predictor terms at a time).

9. Evaluate the final model and confirm that the regression assumptions still hold.

5.3 Model building guidelines

Exploratory data analysis

Building model up

Simplifying model

Model interpretation

5.4 Model interpretation using graphics

Model interpretation

9. Evaluate the final model and confirm that the regression assumptions still hold.
10. During the whole process identify any outliers or other influential points, and look out for potential pitfalls (autocorrelation, multicollinearity, excluding important predictors, overfitting, missing data)—address any problems as they occur.

5.3 Model building guidelines

Exploratory data analysis

Building model up
Simplifying model

Model interpretation

5.4 Model interpretation using graphics

Model interpretation

9. Evaluate the final model and confirm that the regression assumptions still hold.
10. During the whole process identify any outliers or other influential points, and look out for potential pitfalls (autocorrelation, multicollinearity, excluding important predictors, overfitting, missing data)—address any problems as they occur.
11. Interpret the final model, including understanding predictor effects on Y , and estimating expected values of Y and predicting individual values of Y at particular values of the predictors (taking care not to extrapolate outside the sample data region).

5.3 Model building guidelines

Exploratory data analysis

Building model up
Simplifying model

Model interpretation

5.4 Model interpretation using graphics

Model interpretation

9. Evaluate the final model and confirm that the regression assumptions still hold.
10. During the whole process identify any outliers or other influential points, and look out for potential pitfalls (autocorrelation, multicollinearity, excluding important predictors, overfitting, missing data)—address any problems as they occur.
11. Interpret the final model, including understanding predictor effects on Y , and estimating expected values of Y and predicting individual values of Y at particular values of the predictors (taking care not to extrapolate outside the sample data region).
12. Interpret the final model using graphics—see next section.

5.3 Model building guidelines

Exploratory data analysis

Building model up
Simplifying model

Model interpretation

5.4 Model interpretation using graphics

9. Evaluate the final model and confirm that the regression assumptions still hold.
10. During the whole process identify any outliers or other influential points, and look out for potential pitfalls (autocorrelation, multicollinearity, excluding important predictors, overfitting, missing data)—address any problems as they occur.
11. Interpret the final model, including understanding predictor effects on Y , and estimating expected values of Y and predicting individual values of Y at particular values of the predictors (taking care not to extrapolate outside the sample data region).
12. Interpret the final model using graphics—see next section.
 - Examples—see case studies in Chapter 6.

Predictor effect plots

5.3 Model building guidelines

5.4 Model interpretation using graphics

Predictor effect plots

CREDITCARD

example

X_1 effect

X_1 effect plot

Interpreting X_1 effect

X_2 effect

X_2 effect plot

Interpreting X_2 effect

Gender effect

- Transformations and interactions can enhance our ability to model multiple linear regression relationships.
- But they can make the resulting models more difficult to understand and interpret.
- One approach to interpreting such models is to use graphs to plot how Y changes as each predictor changes (and all other predictors are held constant)—called predictor effect plots.
- The use of the term “predictor effect” does *not* imply any kind of causal effect.

CREDITCARD example

5.3 Model building guidelines

5.4 Model interpretation using graphics

Predictor effect plots

CREDITCARD
example

X_1 effect

X_1 effect plot

Interpreting X_1 effect

X_2 effect

X_2 effect plot

Interpreting X_2 effect

Gender effect

- Simulated **CREDITCARD** dataset contains average outstanding monthly balance (Y , in dollars) for 50 individual credit card accounts.

CREDITCARD example

5.3 Model building guidelines

5.4 Model interpretation using graphics

Predictor effect plots

CREDITCARD example

X_1 effect

X_1 effect plot

Interpreting X_1 effect

X_2 effect

X_2 effect plot

Interpreting X_2 effect

Gender effect

- Simulated **CREDITCARD** dataset contains average outstanding monthly balance (Y , in dollars) for 50 individual credit card accounts.
- Possible predictors include:
 - X_1 = average monthly purchases (in hundreds of dollars);
 - X_2 = average monthly housing expenses (in hundreds of dollars);
 - D_3 is an indicator variable that is 1 for renters and 0 for homeowners;
 - D_4 is an indicator variable that is 1 for males and 0 for females.

CREDITCARD example

5.3 Model building guidelines

5.4 Model interpretation using graphics

Predictor effect plots

CREDITCARD example

X_1 effect

X_1 effect plot

Interpreting X_1 effect

X_2 effect

X_2 effect plot

Interpreting X_2 effect

Gender effect

- Simulated **CREDITCARD** dataset contains average outstanding monthly balance (Y , in dollars) for 50 individual credit card accounts.
- Possible predictors include:
 - X_1 = average monthly purchases (in hundreds of dollars);
 - X_2 = average monthly housing expenses (in hundreds of dollars);
 - D_3 is an indicator variable that is 1 for renters and 0 for homeowners;
 - D_4 is an indicator variable that is 1 for males and 0 for females.
- Final model results:
$$\hat{Y} = 14.35 + 13.94X_1 - 4.92X_2 + 13.15D_3 - 5.37D_4 + 12.65D_3X_2 - 0.51X_1^2.$$

5.3 Model building guidelines

5.4 Model interpretation using graphics

Predictor effect plots
CREDITCARD
example

X_1 effect

X_1 effect plot

Interpreting X_1 effect

X_2 effect

X_2 effect plot

Interpreting X_2 effect

Gender effect

- Consider how Y changes as X_1 changes.

5.3 Model building guidelines

5.4 Model interpretation using graphics

Predictor effect plots
CREDITCARD example

X_1 effect

X_1 effect plot

Interpreting X_1 effect

X_2 effect

X_2 effect plot

Interpreting X_2 effect

Gender effect

- Consider how Y changes as X_1 changes.
- Isolate this change in Y when we hold X_2 , renter status, and gender constant:

5.3 Model building guidelines

5.4 Model interpretation using graphics

Predictor effect plots
CREDITCARD
example

X_1 effect

X_1 effect plot
Interpreting X_1
effect

X_2 effect

X_2 effect plot
Interpreting X_2
effect

Gender effect

- Consider how Y changes as X_1 changes.
- Isolate this change in Y when we hold X_2 , renter status, and gender constant:
 - hold X_2 constant at sample mean of X_2 ,
 $m_{X_2} = 6.5882$;
 - hold renter status constant at reference level,
 $D_3 = 0$ (homeowners);
 - hold gender constant at reference level,
 $D_4 = 0$ (female).

- Consider how Y changes as X_1 changes.
- Isolate this change in Y when we hold X_2 , renter status, and gender constant:
 - hold X_2 constant at sample mean of X_2 ,
 $m_{X_2} = 6.5882$;
 - hold renter status constant at reference level,
 $D_3 = 0$ (homeowners);
 - hold gender constant at reference level,
 $D_4 = 0$ (female).
- X_1 effect = $14.348 + 13.94X_1 - 4.919(6.5882) + 13.15(0) - 5.37(0) + 12.65(0)(6.5882) - 0.51X_1^2$
 $= 14.348 + 13.94X_1 - 32.407 - 0.51X_1^2$
 $= -18.06 + 13.94X_1 - 0.51X_1^2.$

X_1 effect plot

5.3 Model building guidelines

5.4 Model interpretation using graphics

Predictor effect plots
CREDITCARD
example

X_1 effect

X_1 effect plot

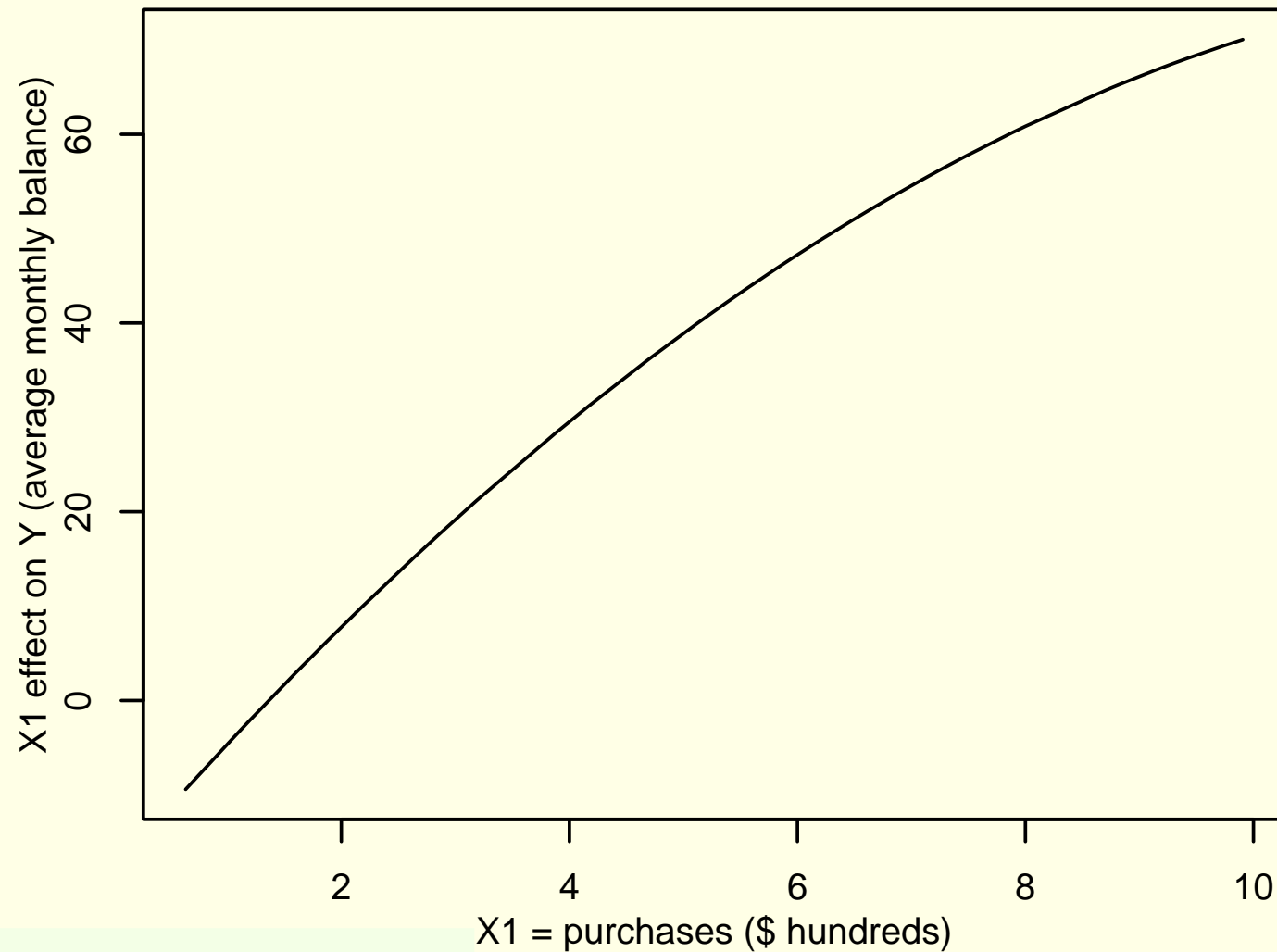
Interpreting X_1
effect

X_2 effect

X_2 effect plot
Interpreting X_2
effect

Gender effect

$$X_1 \text{ effect} = -18.06 + 13.94X_1 - 0.51X_1^2.$$



Interpreting X_1 effect

- High spending female homeowners with average monthly housing expenses tend to carry a higher credit card balance than low spenders, but balance increases become smaller the more that is spent each month.

5.3 Model building guidelines

5.4 Model interpretation using graphics

Predictor effect plots
CREDITCARD example

X_1 effect

X_1 effect plot

Interpreting X_1 effect

X_2 effect

X_2 effect plot

Interpreting X_2 effect

Gender effect

Interpreting X_1 effect

5.3 Model building guidelines

5.4 Model interpretation using graphics

Predictor effect plots
CREDITCARD example

X_1 effect

X_1 effect plot

Interpreting X_1 effect

X_2 effect

X_2 effect plot

Interpreting X_2 effect

Gender effect

- High spending female homeowners with average monthly housing expenses tend to carry a higher credit card balance than low spenders, but balance increases become smaller the more that is spent each month.
- When X_1 increases from \$200 to \$300, expect Y to increase $(-18.06 + 13.94(3) - 0.51(3^2)) - (-18.06 + 13.94(2) - 0.51(2^2)) = \11.39 .

Interpreting X_1 effect

5.3 Model building guidelines

5.4 Model interpretation using graphics

Predictor effect plots
CREDITCARD example

X_1 effect

X_1 effect plot

Interpreting X_1 effect

X_2 effect

X_2 effect plot

Interpreting X_2 effect

Gender effect

- High spending female homeowners with average monthly housing expenses tend to carry a higher credit card balance than low spenders, but balance increases become smaller the more that is spent each month.
- When X_1 increases from \$200 to \$300, expect Y to increase $(-18.06 + 13.94(3) - 0.51(3^2)) - (-18.06 + 13.94(2) - 0.51(2^2)) = \11.39 .
- When X_1 increases from \$800 to \$900, expect Y to increase $(-18.06 + 13.94(9) - 0.51(9^2)) - (-18.06 + 13.94(8) - 0.51(8^2)) = \5.27 .

Interpreting X_1 effect

5.3 Model building guidelines

5.4 Model interpretation using graphics

Predictor effect plots
CREDITCARD example

X_1 effect

X_1 effect plot

Interpreting X_1 effect

X_2 effect

X_2 effect plot

Interpreting X_2 effect

Gender effect

- High spending female homeowners with average monthly housing expenses tend to carry a higher credit card balance than low spenders, but balance increases become smaller the more that is spent each month.
- When X_1 increases from \$200 to \$300, expect Y to increase $(-18.06 + 13.94(3) - 0.51(3^2)) - (-18.06 + 13.94(2) - 0.51(2^2)) = \11.39 .
- When X_1 increases from \$800 to \$900, expect Y to increase $(-18.06 + 13.94(9) - 0.51(9^2)) - (-18.06 + 13.94(8) - 0.51(8^2)) = \5.27 .
- These increases also hold for other values of X_2 , D_3 , and D_4 (e.g., try male renters with $X_2 = 4$).

Interpreting X_1 effect

5.3 Model building guidelines

5.4 Model interpretation using graphics

Predictor effect plots
CREDITCARD example

X_1 effect

X_1 effect plot

Interpreting X_1 effect

X_2 effect

X_2 effect plot

Interpreting X_2 effect

Gender effect

- High spending female homeowners with average monthly housing expenses tend to carry a higher credit card balance than low spenders, but balance increases become smaller the more that is spent each month.
- When X_1 increases from \$200 to \$300, expect Y to increase $(-18.06 + 13.94(3) - 0.51(3^2)) - (-18.06 + 13.94(2) - 0.51(2^2)) = \11.39 .
- When X_1 increases from \$800 to \$900, expect Y to increase $(-18.06 + 13.94(9) - 0.51(9^2)) - (-18.06 + 13.94(8) - 0.51(8^2)) = \5.27 .
- These increases also hold for other values of X_2 , D_3 , and D_4 (e.g., try male renters with $X_2 = 4$).
- So, vertical differences between points along line represent changes in Y as X_1 changes for *all* individuals in the population.

5.3 Model building
guidelines

5.4 Model
interpretation using
graphics

Predictor effect plots

CREDITCARD

example

X_1 effect

X_1 effect plot

Interpreting X_1
effect

X_2 effect

X_2 effect plot

Interpreting X_2
effect

Gender effect

- Consider how Y changes as X_2 changes.

5.3 Model building guidelines

5.4 Model interpretation using graphics

Predictor effect plots
CREDITCARD example

X_1 effect

X_1 effect plot

Interpreting X_1 effect

X_2 effect

X_2 effect plot

Interpreting X_2 effect

Gender effect

- Consider how Y changes as X_2 changes.
- Since X_2 is included in an interaction term, D_3X_2 , we need to take into account renter status.

5.3 Model building guidelines

5.4 Model interpretation using graphics

Predictor effect plots
CREDITCARD example

X_1 effect

X_1 effect plot

Interpreting X_1 effect

X_2 effect

X_2 effect plot

Interpreting X_2 effect

Gender effect

- Consider how Y changes as X_2 changes.
- Since X_2 is included in an interaction term, D_3X_2 , we need to take into account renter status.
- Isolate this change in Y when we hold X_1 and gender constant:

5.3 Model building guidelines

5.4 Model interpretation using graphics

Predictor effect plots
CREDITCARD
example

X_1 effect

X_1 effect plot
Interpreting X_1
effect

X_2 effect

X_2 effect plot
Interpreting X_2
effect

Gender effect

- Consider how Y changes as X_2 changes.
- Since X_2 is included in an interaction term, D_3X_2 , we need to take into account renter status.
- Isolate this change in Y when we hold X_1 and gender constant:
 - hold X_1 constant at sample mean of X_1 ,
 $m_{X_1} = 6.0242$;
 - hold gender constant at reference level,
 $D_4 = 0$ (female).

- Consider how Y changes as X_2 changes.
- Since X_2 is included in an interaction term, D_3X_2 , we need to take into account renter status.
- Isolate this change in Y when we hold X_1 and gender constant:
 - hold X_1 constant at sample mean of X_1 , $m_{X_1} = 6.0242$;
 - hold gender constant at reference level, $D_4 = 0$ (female).
- X_2 effect = $14.348 + 13.937(6.0242) - 4.92X_2 + 13.15D_3 - 5.37(0) + 12.65D_3X_2 - 0.509(6.0242^2)$
= $14.348 + 83.959 - 4.92X_2 + 13.15D_3 + 12.65D_3X_2 - 18.472$
= $79.84 - 4.92X_2 + 13.15D_3 + 12.65D_3X_2$.

X₂ effect plot

5.3 Model building guidelines

5.4 Model interpretation using graphics

Predictor effect plots
CREDITCARD example

X₁ effect

X₁ effect plot

Interpreting X₁ effect

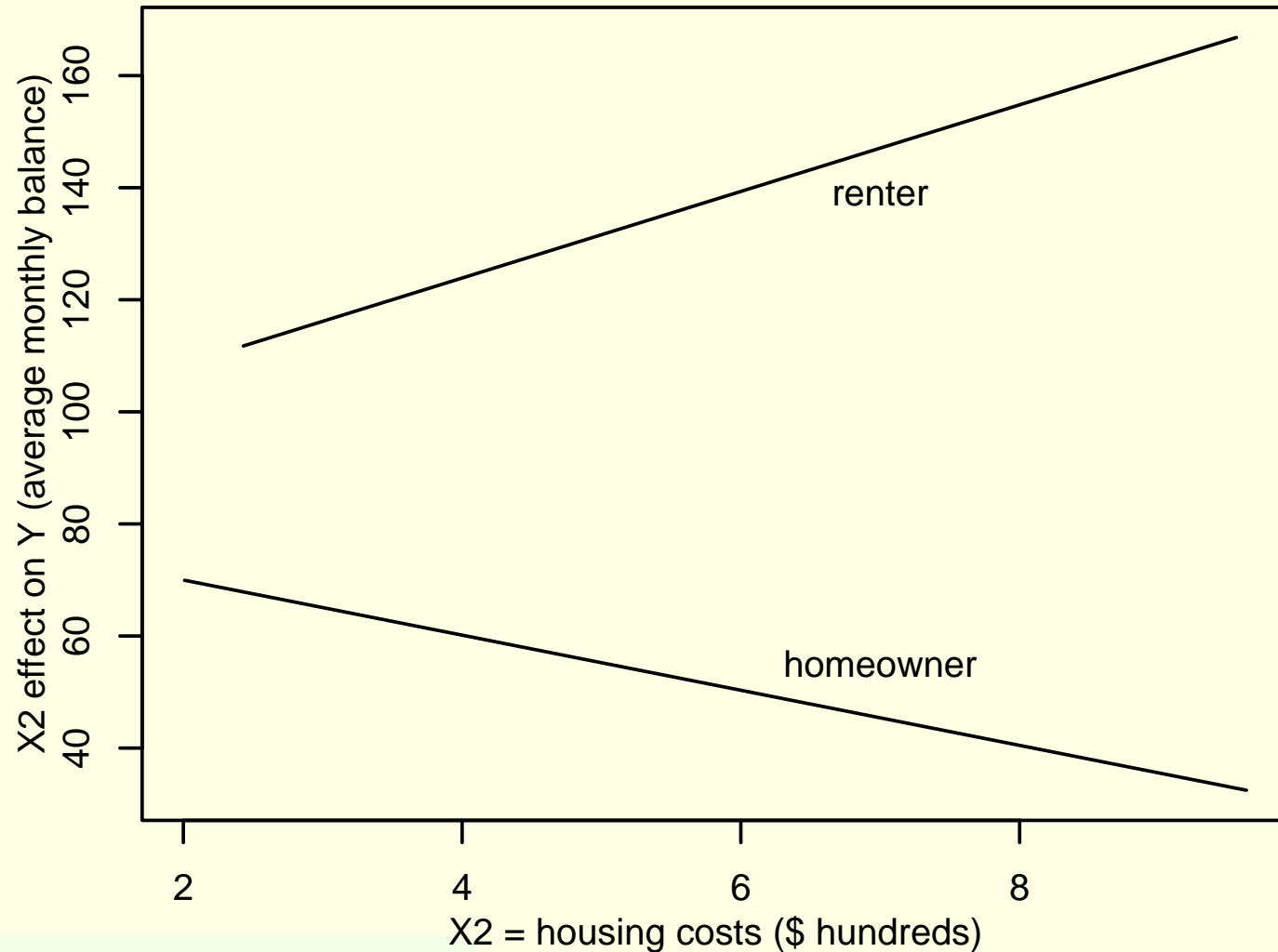
X₂ effect

X₂ effect plot

Interpreting X₂ effect

Gender effect

$$X_2 \text{ effect} = 79.84 - 4.92X_2 + 13.15D_3 + 12.65D_3X_2.$$



Interpreting X_2 effect

- Renters tend to carry a higher credit card balance than homeowners, and renters' balances increase as housing expenses increase, whereas homeowners' balances decrease as housing expenses increase.

5.3 Model building guidelines

5.4 Model interpretation using graphics

Predictor effect plots

CREDITCARD

example

X_1 effect

X_1 effect plot

Interpreting X_1 effect

X_2 effect

X_2 effect plot

Interpreting X_2 effect

Gender effect

Interpreting X_2 effect

- Renters tend to carry a higher credit card balance than homeowners, and renters' balances increase as housing expenses increase, whereas homeowners' balances decrease as housing expenses increase.
- An additional \$100 in housing expenses tends to increase the monthly balance for a renter by \$7.73, but it tends to decrease the monthly balance for a homeowner by \$4.92.

5.3 Model building guidelines

5.4 Model interpretation using graphics

Predictor effect plots
CREDITCARD example

X_1 effect

X_1 effect plot

Interpreting X_1 effect

X_2 effect

X_2 effect plot

Interpreting X_2 effect

Gender effect

Interpreting X_2 effect

- Renters tend to carry a higher credit card balance than homeowners, and renters' balances increase as housing expenses increase, whereas homeowners' balances decrease as housing expenses increase.
- An additional \$100 in housing expenses tends to increase the monthly balance for a renter by \$7.73, but it tends to decrease the monthly balance for a homeowner by \$4.92.
- Expected difference in Y between renters ($D_3 = 1$) and homeowners ($D_3 = 0$):

$$\begin{aligned} & (14.35 + 13.94X_1 - 4.92X_2 + 13.15(1) - 5.37D_4 + 12.65(1)X_2 - 0.51X_1^2) \\ & - (14.35 + 13.94X_1 - 4.92X_2 + 13.15(0) - 5.37D_4 + 12.65(0)X_2 - 0.51X_1^2) \\ & = 13.15 + 12.65X_2. \end{aligned}$$

5.3 Model building guidelines

5.4 Model interpretation using graphics

Predictor effect plots
CREDITCARD example

X_1 effect

X_1 effect plot

Interpreting X_1 effect

X_2 effect

X_2 effect plot

Interpreting X_2 effect

Gender effect

Interpreting X_2 effect

- Renters tend to carry a higher credit card balance than homeowners, and renters' balances increase as housing expenses increase, whereas homeowners' balances decrease as housing expenses increase.
- An additional \$100 in housing expenses tends to increase the monthly balance for a renter by \$7.73, but it tends to decrease the monthly balance for a homeowner by \$4.92.
- Expected difference in Y between renters ($D_3 = 1$) and homeowners ($D_3 = 0$):
$$\begin{aligned} & (14.35 + 13.94X_1 - 4.92X_2 + 13.15(1) - 5.37D_4 + 12.65(1)X_2 - 0.51X_1^2) \\ & - (14.35 + 13.94X_1 - 4.92X_2 + 13.15(0) - 5.37D_4 + 12.65(0)X_2 - 0.51X_1^2) \\ & = 13.15 + 12.65X_2. \end{aligned}$$
- In other words, renters tend to carry higher credit card balances and the difference becomes greater as average monthly housing expenses increases.

5.3 Model building guidelines

5.4 Model interpretation using graphics

Predictor effect plots
CREDITCARD example

X_1 effect

X_1 effect plot

Interpreting X_1 effect

X_2 effect

X_2 effect plot

Interpreting X_2 effect

Gender effect

5.3 Model building guidelines

5.4 Model interpretation using graphics

Predictor effect plots
CREDITCARD
example

X_1 effect

X_1 effect plot

Interpreting X_1
effect

X_2 effect

X_2 effect plot

Interpreting X_2
effect

Gender effect

- Expected difference in Y between males ($D_4=1$) and females ($D_4=0$):

$$\begin{aligned} & (14.35 + 13.94X_1 - 4.92X_2 + 13.15D_3 - 5.37(1) + \dots) \\ & - (14.35 + 13.94X_1 - 4.92X_2 + 13.15D_3 - 5.37(0) + \dots) \\ & = -5.37. \end{aligned}$$

- Expected difference in Y between males ($D_4=1$) and females ($D_4=0$):

$$\begin{aligned} & (14.35 + 13.94X_1 - 4.92X_2 + 13.15D_3 - 5.37(1) + \dots) \\ & - (14.35 + 13.94X_1 - 4.92X_2 + 13.15D_3 - 5.37(0) + \dots) \\ & = -5.37. \end{aligned}$$

- Thus, males tend to carry lower balances on their credit cards than women (\$5.37 lower on average).